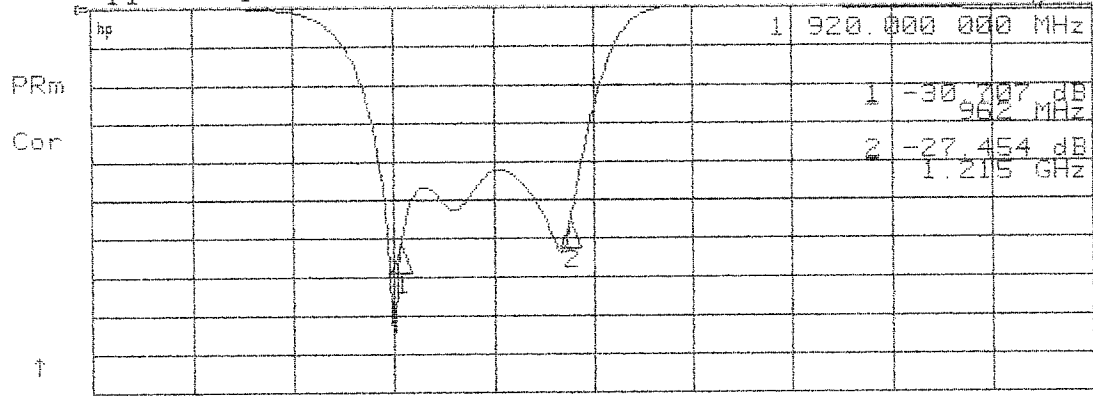


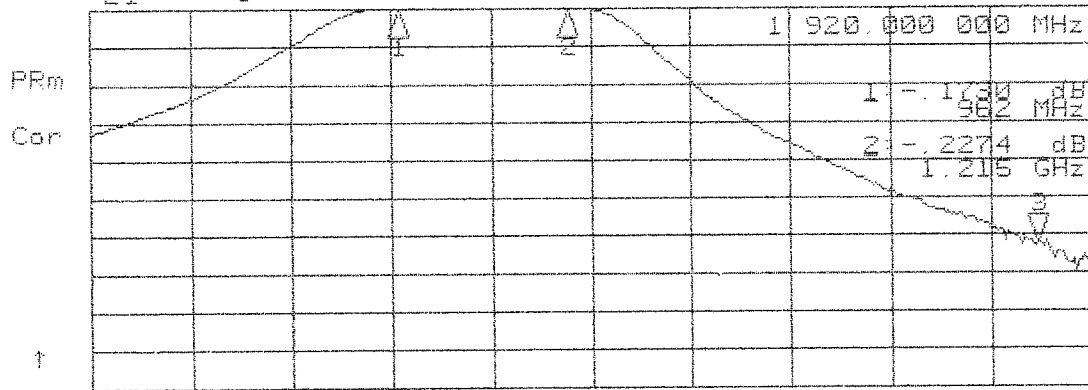
29 Sep 2003 09:46:38

CH1 S₁₁ log MAG 5 dB/ REF 0 dB 3 -45.013 dB



SN 069
PIN 23091-11
MILIT

CH2 S₂₁ log MAG 10 dB/ REF 0 dB 3 -62.092 dB

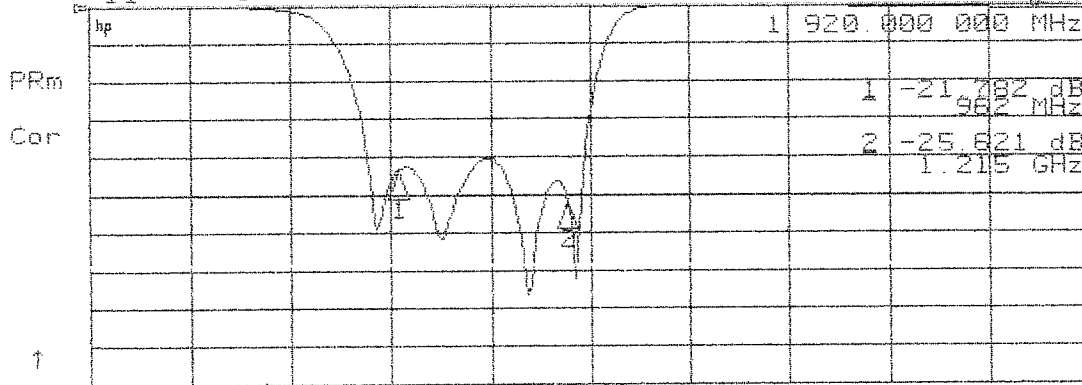


START 500.000 000 MHz STOP 2 000.000 000 MHz



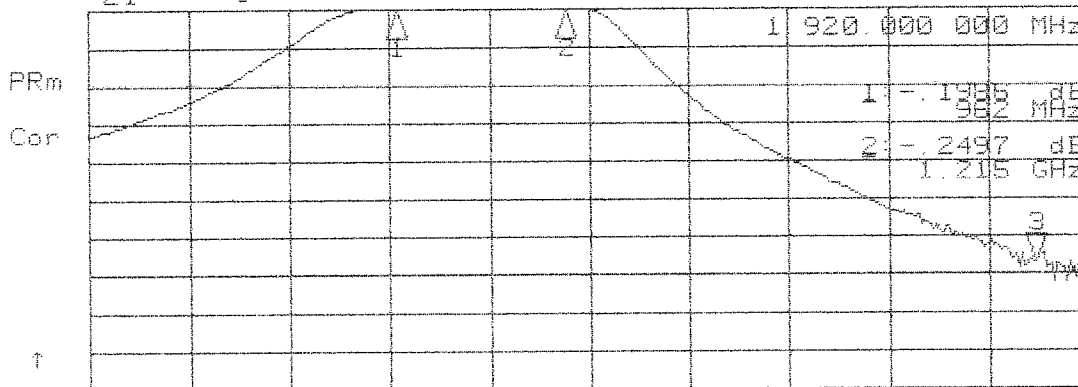
29 Sep 2003 09:49:32

CH1 S₁₁ log MAG 5 dB/ REF 0 dB 2 -41.553 dB



SN 070

CH2 S₂₁ log MAG 10 dB/ REF 0 dB 3 -66.856 dB



START 500.000 000 MHz STOP 2 000.000 000 MHz