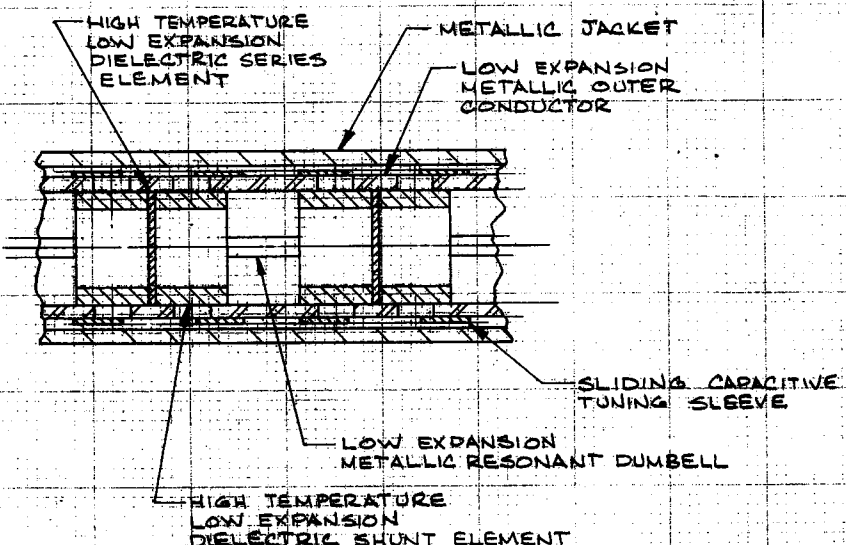
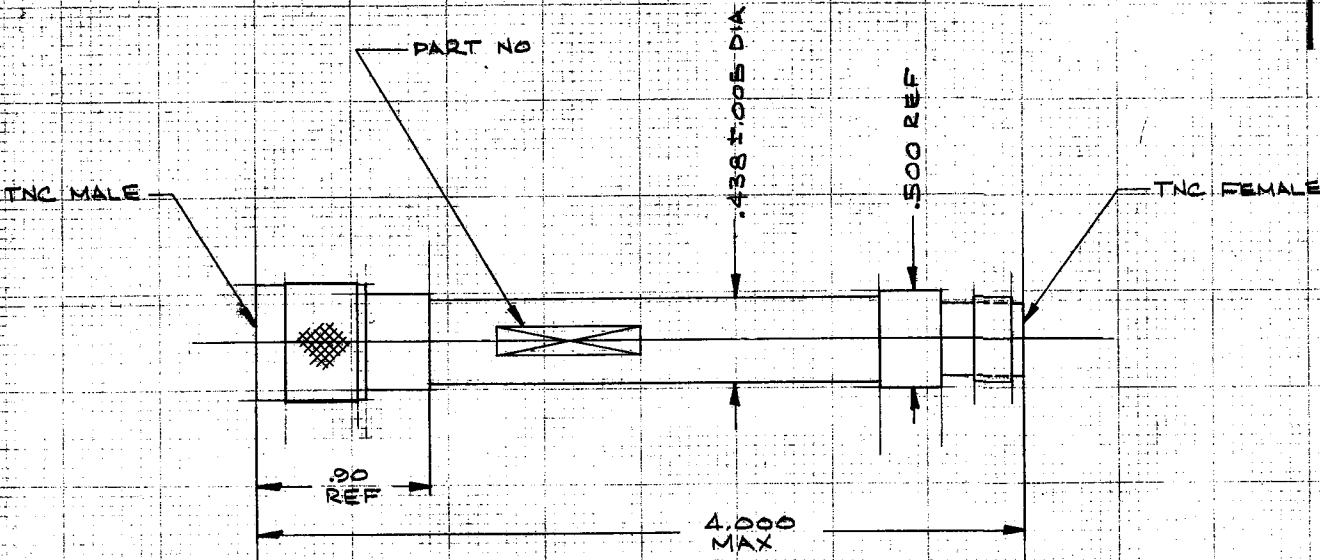


ZONE	LTR	ECN NO.	DESCRIPTION	DATE	APPROVED



THE DETAIL ILLUSTRATED IS INTENDED TO DEFINE A DESIGN TECHNIQUE

INTERNAL CONSTRUCTION

SPECIFICATIONS

CUT-OFF FREQUENCY (F <sub>c</sub> )	310MHZ
INSERTION LOSS	1.0DB MAX 20.0DB MIN
IMPEDANCE	50 OHMS NOMINAL
POWER RATING	10 W AVERAGE 1 KW PEAK
OPERATING TEMPERATURE RANGE	-55°C TO +150°C
VSWR	1.8 MAX
FINISH	SILVER PLATE PER ITTAV SPEC A2370A7, TYPE III

UNLESS OTHERWISE SPECIFIED: DIMENSIONS ARE IN INCHES. TOLERANCES ARE: FRACTIONS ± .010 DECIMALS ± .010 ANGLES ± 0.1° SURFACE FINISH 32 CONDUCTIVITY 20A75		DRAWN RAW	ISSUED 1	DATE JUL 2 1961
PRELIMINARY DOCUMENT NO CHANGES AND NO REWORKING OR SUBJECT MATTER CONTAINED HEREIN SHALL BE USED, COPIED, OR REPRODUCED IN ANY MANNER, OR FOR ANY PURPOSES OTHER THAN AS AUTHORIZED BY MICROWAVE COMPANY INC.		CHECKED E.E. APPD	DATE JUL 2 1961	
NEXT ASSY		USED ON	TITLE HIGH PASS FILTER	
REF 6016-00130-6562		SCALE NONE	SIZE C	CODE IDENT. NO. 7U618
SHEET		OF	DWG. NO. 1280001	REV.

